



TEAL W/TERRA COTTA (TE/TC) OR SOLID TEAL IN DINNERWARE—SOLID TEAL IN ART WARE

TRADITION REMAINS  
NEW HORIZONS AHEAD  
FOR

**FRANKOMA POTTERY**

MADE IN USA  
1991

# Why Frankoma-?

## THE FRANKOMA STORY

FRANKOMA POTTERY has rightfully earned its position as America's outstanding creators of "useful and beautiful" earthenware. The colors, textures and crafted designs are created at Frankoma, and are unique in American ceramics. Frankoma entered the field of ceramics in 1933, utilizing the heritage left it by its predecessors, the South-west Indians. Our aim was to combine the traditional art of the Indians, the spirit of the American Pioneer and the creative tendencies of the youth of the Great Southwest, and mold them into good pottery forms.

John Frank, originator of "Frankoma," came to Oklahoma from Chicago in 1927. His teaching Art and Pottery at the University of Oklahoma and his work with the geological survey - unearthing the Oklahoma clay deposits - brought together valuable material for his future venture of "potting." In 1933 he started a "studio" pottery in Norman, Oklahoma, - equipped with one small kiln, a butter churn for mixing clay, a fruit jar for grinding glazes and a few other crude tools and tables. It was necessary to continue teaching until enough ware was produced to prove that a product could be made of Oklahoma clays that was a contribution to Art and Ceramics and still salable. Resigning his teaching in 1936 he and his wife, Grace Lee, working side by side, set out on a venture of creating beautiful pottery for every day living. They felt the need of using Oklahoma clays for Oklahoma's first pottery. First a clay from Ada was used, then in 1954 a red burning clay dug at Sapulpa became the basis for all Frankoma ware. In 1938 the "studio" grew into a small factory as it moved from Norman to Sapulpa, where it is now. (Original plant 5,500 square feet; through the years it has grown to the existing 79,000 square feet.)

Frankoma demanded of itself to make as fine a pottery as could be made considering the limitations of its materials. This means constant research to take advantage of raw materials and processes as they are brought to light.

Pottery enjoys so many advantages over the more "refined" and delicate ceramic wares. Frankoma Pottery is manufactured by its unique once-fired process - clay body and colored glaze are fused and fired at the maturing point of the clay, and tempered as it slowly cools. It can be used "indoors-outdoors" because of its ruggedness and durability. It can really "take" the handling of every day use. It can be used in a dishwasher. It is also ovenproof and food can be served in the same dish in which it is baked or prepared. It also keeps foods and drinks hot much longer. Color is such an indispensable part of today's decor, and Frankoma creates an exciting wide range of colors and textures. Our "Rutile Art Glazes" which have identified Frankoma's unique tableware around the world have successfully been produced only on our colored earthenware clay. The first to introduce colored dinnerware on the market in the 1940's was one of the basic reasons John Frank was presented the award "1972 Marketing Man of the Year."

Mr. Frank passed away November 10, 1973. Grace Lee, although semi-retired still contributes to Frankoma's designs and policies. The Business continues after Mr. Franks death under the management of their daughter Joniece Frank and a trained, dedicated staff. In 1991 Frankoma Pottery became A Division of Frankoma Industries, Inc.

Grace Lee and The Late John Frank exemplify true American determination and the Free Enterprise System. They started with only a dream, and through hard work created one of America's most unique potteries recognized the world over. 1971 they were named, "National Small Businessman of the Year" and personally recognized by the President of the United States for their accomplishments.



Grace Lee and The Late John Frank (pictured January 1973)

## FRANKOMA COLORS

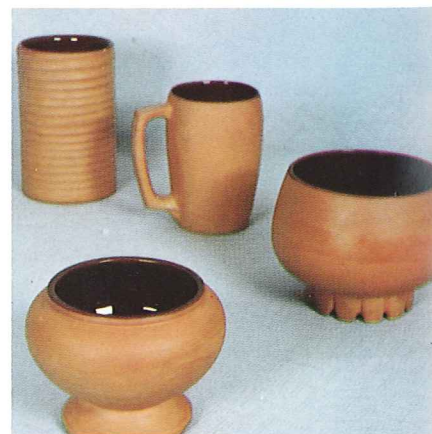
### PEACH-PE



TERRA COTTA & COLORS are available in limited items of dinnerware & accessories. Color combinations are: Green w/Terra Cotta (GR/TC); White w/Terra Cotta (WH/TC); Navy Blue w/Terra Cotta (NB/TC); Mountain Haze w/Terra Cotta (MH/TC); Teal w/Terra Cotta (TE/TC) SEE PAGE #32 FOR DETAILS ON TERRA COTTA Dinnerware & Accessories. Items available in these colors are noted by page as "DWTC".

### TERRA COTTA

Floral containers are offered in SEALED Terra Cotta on the outside and Coffee Color on the inside. NOTE each page as to items available as "FLTC". This is the only way foral containers in Terra Cotta are offered.



# FRANKOMA COLORS



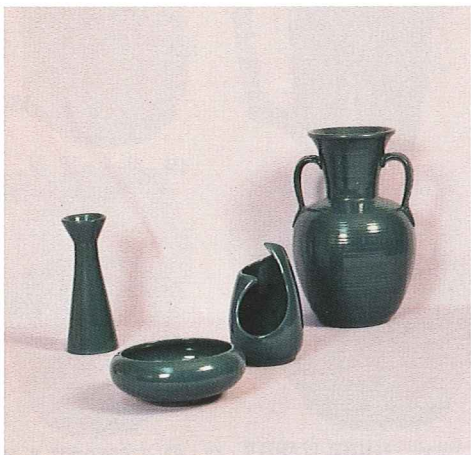
BROWN SATIN - BR



PRAIRIE GREEN - GR



DESERT GOLD - GO



TEAL - TE



FLAME - FL



ONYX BLACK - BK



ROBIN EGG BLUE - BL



WHITE SAND - WH



COUNTRY BLUE - CB



MOUNTAIN HAZE - MH



NAVY BLUE - NB

## Appropriate Containers for Flower Arrangements and Planters



\* V-14—DESERT GOLD/COFFEE



\* V-14—BLACK/WHITE



\* V-14—FLAME/BLACK



\* V-14—Peach/Mtn. Haze



\* V-14—WHITE/NAVY BLUE

\* V-14 Only in colors shown



302—6" CANDLE VASE



4SC—5" CUP-BOWL



26LC—4 1/2" —6 OZ.  
TUMBLER VASE



M2—6" —18 OZ.  
MUG



5M—5 1/2" —16 OZ.  
MUG



4M—4 1/2" —18 OZ.  
MUG



23A—6" SQ. PEDESTALLED  
VASE



F52—7" PEDESTALLED  
URN



176—4" PLANTER



F33—3 3/4 x 7" FLUTED PLANTER



T7—3 1/2" COCONUT PLANTER



95—8 1/2" FREE FORM VASE



37—4" HEXAGONAL  
PLANTER



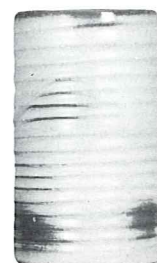
65—6 1/2" HEXAGONAL  
VASE



64—9 1/2" OCTAGONAL  
VASE



72—10" RINGED  
CYLINDER VASE



172—6 1/2" RINGED  
CYLINDER VASE



272—4" RINGED  
CYLINDER VASE

Not Available in Flame. Not Available in Flame.

### BUD VASES



20—6"



31—6"



28—6 1/2"



38—6"



47—5"



40—5"



18—5"

Small containers for miniature or dried arrangements



BP



XO



504

\* BP and 4Y — Solid Colors only. NO T.C.



\* 4Y

### Appropriate Containers for Flower Arrangements and Planters



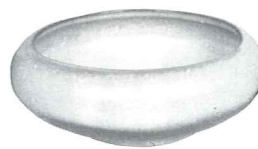
178-4 3/4" SWIRL PLANTER



177-5 1/2" SWIRL PLANTER



212-8" ROUND BOWL



212-2-6 1/2" ROUND BOWL



212-4-5" ROUND BOWL -



224-8" ROUND BOWL



224-2-7 1/2" ROUND BOWL -



224-3-6 1/2" ROUND BOWL -



22A-5" FOOTED VASE



22-7" FOOTED ROUND VASE



235-6" FLOWER ARRANGER



F29-6" DRAPERY VASE



234-7 1/2" FREEFORM BOWL



14-8" PLANTER



17-8 x 3" PLANTER



913-9" DUTCH SHOE PLANTER



228-8" SWAN PLANTER



208A-9 1/2" MALLARD PLANTER



208-12" MALLARD PLANTER



4N-8" BOWL



4XL-7" BOWL



6N-7 1/2" BOWL



FS-FRANKOMA SIGN



188 - 4 1/2" BASKET PLANTER -



433-BOOT BOOKENDS  
Not Available in Terra Cotta.



133-6 1/2" BOOT VASE



134-4" BOOT



C-33-5" BOOT MUG



C20 - 12 oz. MOTOR MUG w/Cork Base

Available in FRANKOMA COLORS & FLTC - \*Except where noted. Add 50% for Flame Color charts pages 2 & 3 (Sizes are approximate and may vary)

# Appropriate Containers for Flower Arrangements and Planters

HONEY JUGS — SYRUP PITCHERS — FLOWER CONTAINERS

## HONEY JUGS



803—HONEY JAR W/LID



838—10 OZ. PITCHER



831—16 OZ. PITCHER



833—24 OZ. PITCHER

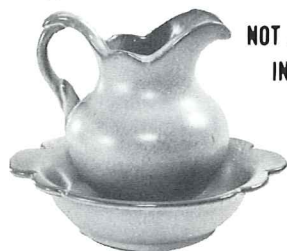


835—24 OZ. PITCHER



8—24 OZ. PITCHER

F30A—5½" PITCHER  
F30B—7" BOWL



F30AB—PITCHER & BOWL SET

40A—4" PITCHER  
40B—5" BOWL

NOT AVAILABLE  
IN FLAME



40AB—PITCHER & BOWL SET



70-A—7" RINGED JARDINIERE



70-B—5½" RINGED  
JARDINIERE



201—9" BOWL



B3—4½" CORK BARK PLANTER



396—7" TURTLE PLANTER



390—6" ELEPHANT PLANTER 5.50



391—6" PIG PLANTER



T9  
7" SHELL BOWL



222—12" CORNUCOPIA  
(Not Available in Flame)



57—7" CORNUCOPIA



71—10" LEAF HANDLED VASE

## ASH TRAYS

Items below not available in Terra Cotta \* Except where noted



\*167—3½" MINIATURE  
HORSESHOE



458—7" THREE SIDED



474—4" ROUND  
ASH TRAY



477—4" Dogwood



512—4" Leaf



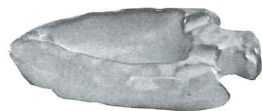
513—4" Clover



463—4" Arrowhead



\*170—Turtle Paper Weight



453—7" ARROWHEAD



469—4½" SAFETY  
ASH TRAY



482 - 4"  
BUTTERFLY

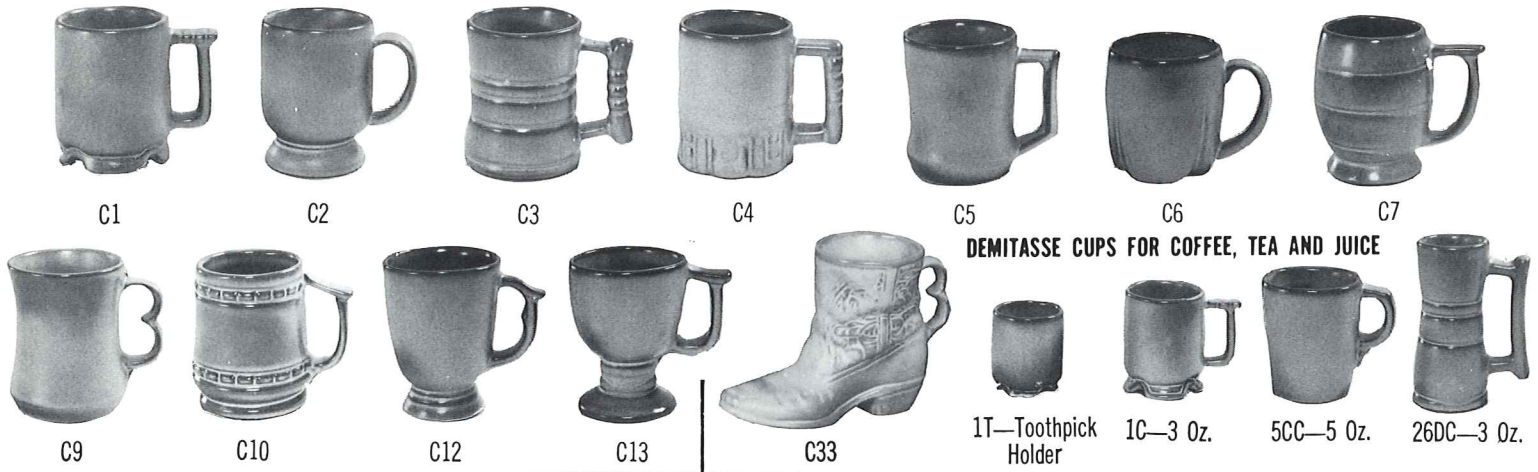
MINIATURES: Appropriate for Pin Trays,  
Nut Cups, Ash Trays, etc.



817—6" TABLE BELL 815—7" TABLE BELL 814—6" TABLE BELL

# Accessories for All Dinner Ware Patterns

**"MUGS"** for coffee, tea, milk, soup, soda. YOU NAME IT! — 8 to 11 oz.



C1

C2

C3

C4

C5

C6

C7

C9

C10

C12

C13

C33

DEMITASSE CUPS FOR COFFEE, TEA AND JUICE

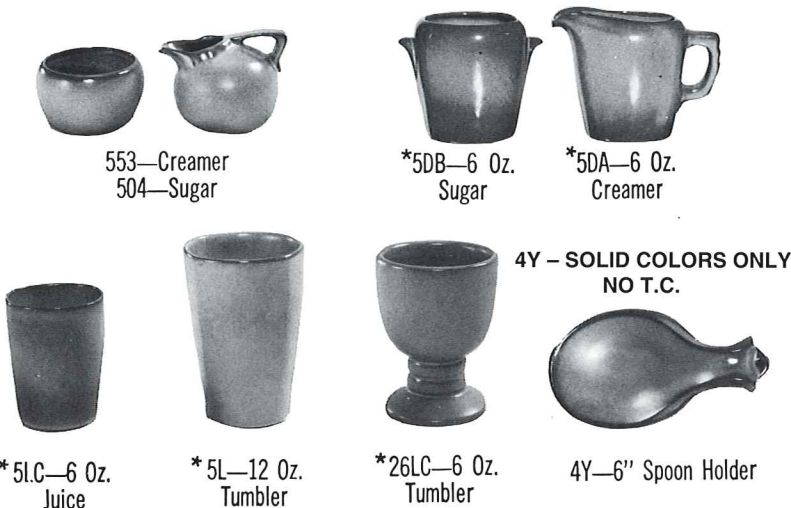
1T—Toothpick Holder

1C—3 Oz.

5CC—5 Oz.

26DC—3 Oz.

**INDIVIDUAL — MINIATURE — SUGAR & CREAMERS**



553—Creamer  
504—Sugar

\*5DB—6 Oz. Sugar

\*5DA—6 Oz. Creamer

\*5LC—6 Oz. Juice

\*5L—12 Oz. Tumbler

\*26LC—6 Oz. Tumbler

4Y — SOLID COLORS ONLY  
NO T.C.

4Y—6" Spoon Holder



\*M2—18 Oz. Stein

\*5M—16 OZ. MUG

7M—14 OZ. MUG

\* See Page # 24

\*4M—18 OZ. MUG

C20 - 12 oz. MOTOR MUG w/Cork Base

\*4SC—11 Oz. Soup Cup

**6" FELTED TRIVETS — HOT PLATES**

Trivets show best in GR,GO,WH,T.C., & FL.



BTR—Butterfly

OTR—Owl

94TR—Rooster

FLTR - American Flag

8TR—BIRD

CBTR—COWBOY



\* 6T—6 Cup Teapot

\*6J—2 Cup Teapot

\* 26D—1 Qt. Pitcher

\*81—1 Qt. Pitcher

\*80—2 Qt. Pitcher  
NOT Available in Flame



OK3—5 Civilized Tribes Trivet



7TR—Cherokee Alphabet

Available in  
GO,WH,T.C.,  
& FL only-  
ADD 50% for Flame

Available in FRANKOMA COLORS \*also DWTC—  
\*Except where noted. Add 50% for Flame

# GLAZE LITHO TRANSFERS

## STOCK TRANSFER PAGES 8 - 9

### SUGGESTED ITEMS FOR TRANSFERS PG.10

#### ORDER BY ITEM AND TRANSFER NUMBER

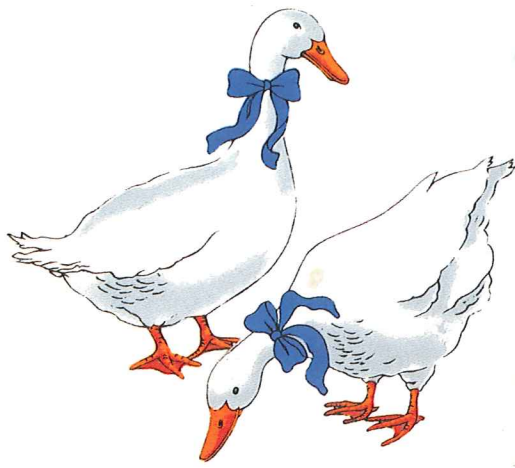
LET US PROMOTE YOUR COMPANY, YOUR SPECIAL EVENTS. Write or call for quotes.

GLAZE LITHO TRANSFERS ARE FIRED ON THEREFORE STILL MICRO-SAFE, DISHWASHER AND OVEN SAFE



## CONTACT US FOR SPECIAL DESIGNS





D-150



67 - 1 1/4" Tall  
72 - 2 1/4" Tall  
78 - 3" Tall



68 - 1 1/4" Tall  
73 - 2 1/4" Tall  
79 - 3" Tall



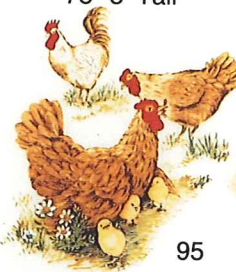
69 - 1 1/4" Tall  
74 - 2 1/4" Tall  
80 - 3" Tall



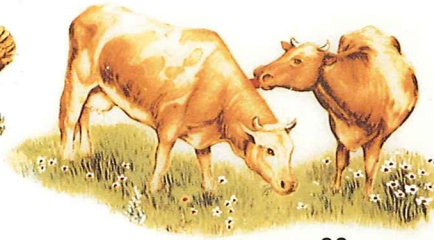
70 - 1 1/4" Tall  
75 - 2 1/4" Tall  
81 - 3" Tall



84 - 3" Tall  
85 - 4 1/2" Tall



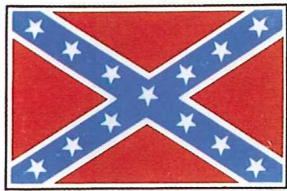
95



96



97



100



101



109



OHIO  
STATE  
103



MICHIGAN  
106



107



108



SMU  
111



TEXAS  
113



ARKANSAS  
RAZORBACKS  
117



ASU  
122

The University of Texas VALLEY CITY



THE UNIVERSITY OF TEXAS  
126



VALLEY CITY  
STATE  
128



INDIANA  
UNIVERSITY  
129



GEORGIA  
130



HOUSTON  
COUGARS  
131



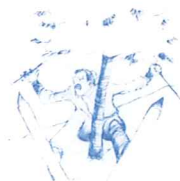
WEST TEXAS  
STATE  
132



MSU  
133



MEMPHIS STATE  
TIGERS  
134



135 - 2" Tall  
136 - 4 1/2" Tall



137 - 2" Tall  
138 - 4 1/2" Tall



139 - 2" Tall  
140 - 4 1/2" Tall



INDIANA  
141



KENTUCKY  
142



143



144



145



146

OTHER GLAZE LITHOS AVAILABLE - NOT ALL SHOWN HERE - INQUIRE FOR YOUR NEEDS.

# ITEMS FOR CERAMIC TRANSFERS



# BATH SETS AND ACCESSORIES



410 Set



411 Set



412 Set



413 Set

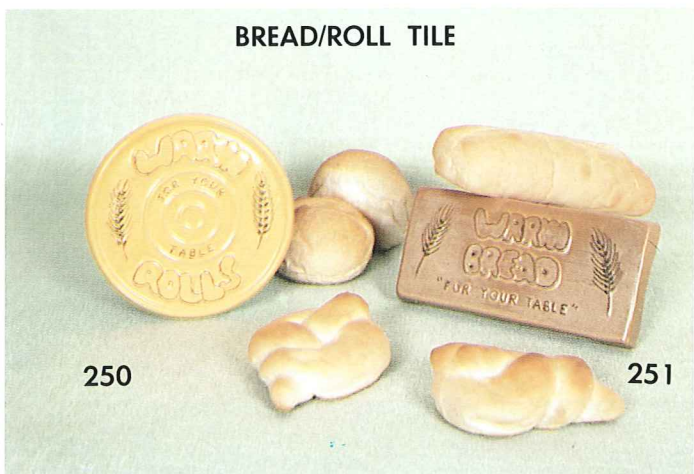


(sizes are approximate and may vary slightly)

Available in FRANKOMA COLORS – \*Except where noted.

Color charts pages 2 & 3

Add 50% for Flame



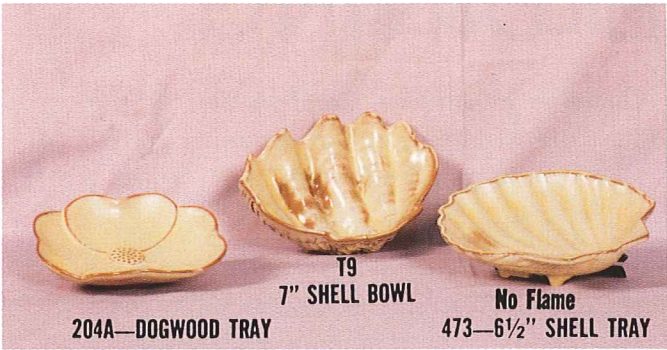
Place oven warmed bread tile in bread server, cover with cloth napkin. Bread remains warm throughout your meal.

In keeping with FRANKOMA'S VERSITILITY, for your personal family's needs, are presented these BOWLS for every need.

Beautifully designed for serving bowls, fruit bowls, center pieces, flower arrangements . . . FRANKOMA is only limited by your imagination.



**TRAYS SUITABLE FOR RELISH, NUTS, JELLIES, SALADS AND CANDY**



204A—DOGWOOD TRAY

T9  
7" SHELL BOWL

No Flame  
473—6½" SHELL TRAY

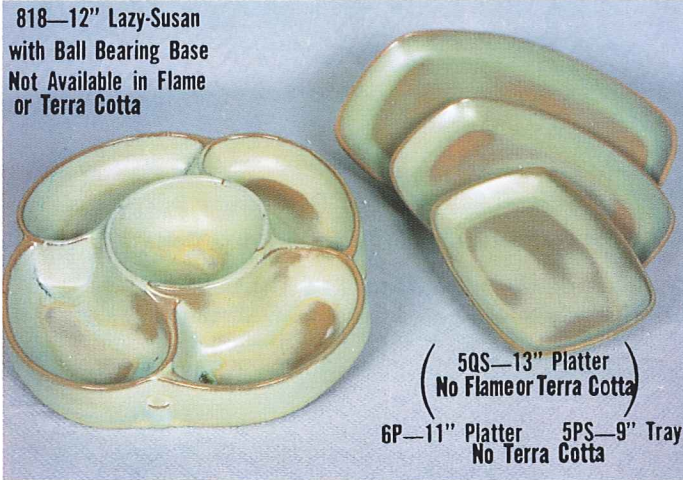


223—6" FOUR LEAF CLOVER

83—12" Division Relish Dish

225—7" LEAF TRAY

Not Available in Flame or Terra Cotta.



818—12" Lazy-Susan  
with Ball Bearing Base  
Not Available in Flame  
or Terra Cotta

5QS—13" Platter  
No Flame or Terra Cotta

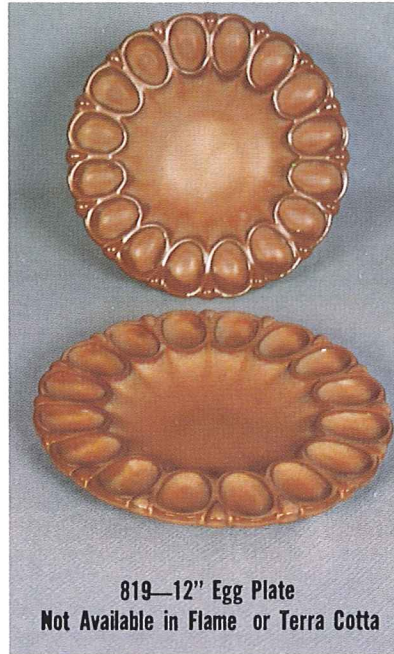
6P—11" Platter 5PS—9" Tray  
No Terra Cotta



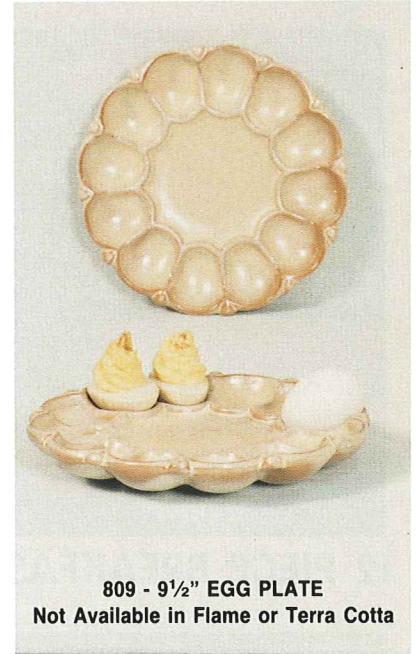
T10—12" SHELL BOWL  
T9—7" SHELL BOWL  
(Center piece or Salad set)  
(No Terra Cotta or Flame)



257/B CHILDREN'S SET  
BOXED W/SEE THRU LID



819—12" Egg Plate  
Not Available in Flame or Terra Cotta



809 - 9½" EGG PLATE  
Not Available in Flame or Terra Cotta



72T - 10" Wine & Beverage Cooler  
Soak in water, place cool wine bottle inside, keeps wine or beverage cool through evaporation during serving time. AVAILABLE IN TERRA COTTA ONLY

82T - 1 3/4 qt (54 oz) Beverage Server  
Soak server in water and cool in refrigerator for approximately 20 to 30 minutes. Pour cool wine or beverage in container and serve. Wine or beverage will stay cool approximately 4 hours. AVAILABLE IN DWTC

HC - 5" Coaster - (perfect to complete sets above)  
TERRA COTTA ONLY



Not Available in Flame or Terra Cotta.

227—17" LEAF TRAY

225—7" LEAF TRAY

226—11" LEAF TRAY

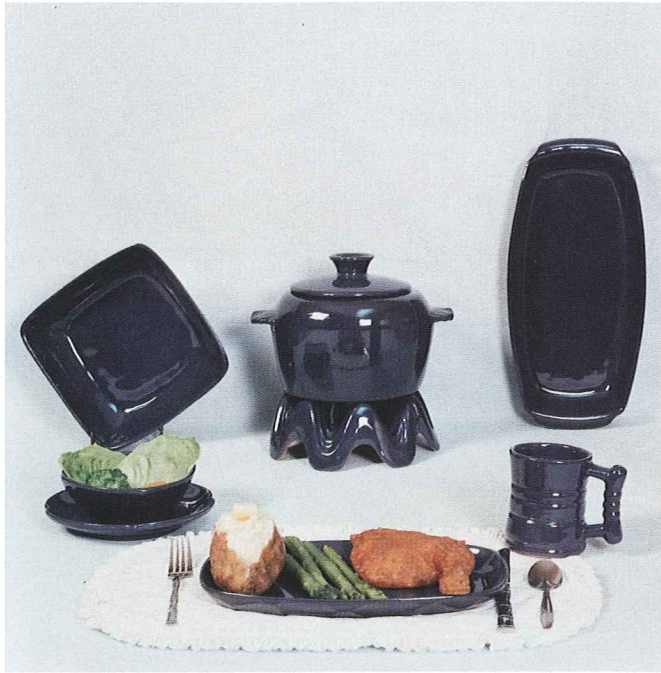


No Terra Cotta

WA1—8" Warmer w/Candle  
WA3—6" Warmer w/Candle

Available in Standard Frankoma Colors  
- except where noted - ADD 50% for Flame

# PLATTER STYLE DINING



**Casual — Informal — Comfortable**  
 Try platter style dining once, and never return to  
 Dining in the Round

**6PLS SET 36-PIECE SERVICE SET FOR EIGHT Boxed**  
**6PLS Set Not Available in Terra Cotta**

- |                        |                    |
|------------------------|--------------------|
| 8-C3—Mugs              | 1-5Q —13" Platter  |
| 8-6P—11" Platters      | 1-5DA—Creamer      |
| 8-5G-7" Salad & Desert | 1-5DB—Sugar        |
| 8-5X-14 Oz. Bowl       | 1-5NS—9" Veg. Bowl |

**5QSLS SET 36-PIECE SERVICE SET FOR EIGHT Boxed**  
**5QSLS Set Not Available in Flame or Terra Cotta**

- |                        |                    |
|------------------------|--------------------|
| 8-C3—Mugs              | 1-5Q—13" Platter   |
| 8-5QS—13" Platters     | 1-5DA—Creamer      |
| 8-5G-7" Salad & Desert | 1-5DB—Sugar        |
| 8-5X-14 Oz. Bowl       | 1-5NS—9" Veg. Bowl |



**12 PIECE BREAKFAST SET**

4 — 5XS 10 OZ. BOWLS 4 — 5PS PLATTERS 4 — C3 MUGS

**B  
S  
E  
T**



**12 PIECE LUNCHEON SET**

4 5X 14 OZ. BOWLS 4 — 6P PLATTERS 4 — C3 MUGS

Available in FRANKOMA COLORS & DWTC — Add 50% for Flame

**L  
S  
E  
T**



# NEW DINING EXPERIENCE



## MEXICAN SET — (M-SET) PLACE SETTING FOR 4

- 4—Spill proof Taco holders \*\*
- 4—14 oz. Bowls
- 4—11" Platters (6P)
- 4—26LC 6 oz. Tumblers

\*\* Not available in Flame or Terra Cotta

**MEXICAN STYLE DINING:** Platters offer space to separate food. Taco holder keeps your Taco looking appetizing and on the server. All dishes ovenproof, serve it "HOT" and keep it that way.

## FONDUE SET — (F-SET) PLACE SETTING FOR 4

- 4—11" Platters (6P)
- 4—14 oz. Salad Bowls
- 4—26LC 6 oz. Tumblers
- 12—XO 3 oz. Dip Dishes



**FONDUE STYLE DINING:** Formal or casual, have your guests admiring the decor, and enjoying those secret dips which enhance the meal.



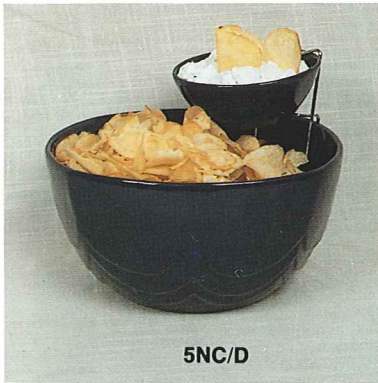
## ORIENTAL SET — (O-SET) PLACE SETTING FOR 4

- 4—11" Platters (6P)
- 4—14 oz. Bowls
- 4—5CC 5 oz. Tea Cups
- 8—XO 3 oz. Sauce Dishes

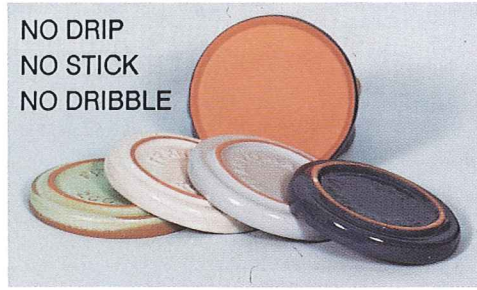
**ORIENTAL STYLE DINING:** Serve your Oriental meal on dinnerware designed for the proper table. Sweet and Sour dishes and Tea cups to make your dinner look authentic Oriental.

Available in FRANKOMA COLORS & DWTC — \*Except where noted. Add 50% for Flame

# Gourmet Items



5NC/D



NO DRIP  
NO STICK  
NO DRIBBLE

265P - 3 1/2" Terra Cotta w/ Color Coaster

NOW AVAILABLE

The fantastic Coaster # 265-P in most Frankoma colors-(NO Flame or All Terra Cotta) The T.C. on the inside absorbs moisture from your glass eliminating dripping & dribbling on your furniture. AND your glass won't stick to the coaster. Choose the color that fits your decor.



\*Milk Can Salt & Pepper MC - 4 1/2"



\*4 1/2" Salt & Pepper 26-H



\*6 oz. Jelly Jar w/Lid 802



\*TISP-Sugar Pack Holder

\*RH - 4 1/2" Ring Holder/Apple Bake



72 SET

PASTA CANNISTER SET

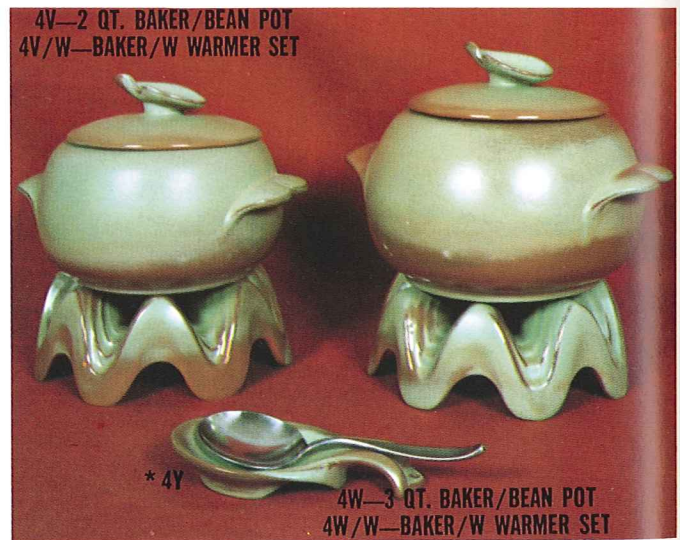


\* 247—SOUP LADLE (Not Available in Flame)

247-Soup Ladle (Not available in Flame or T.C.)

245—2 QT. SOUP TUREEN  
245/W—TUREEN W/WARMER  
245/P—TUREEN W/PLATE

246—3 QT. SOUP TUREEN  
246/W—TUREEN W/WARMER  
246/P—TUREEN W/PLATE



4V—2 QT. BAKER/BEAN POT  
4V/W—BAKER/W WARMER SET

\* 4Y

4W—3 QT. BAKER/BEAN POT  
4W/W—BAKER/W WARMER SET



6VS—1 1/2 QT. BAKER  
6VS/W BAKER & WARMER SET

6U  
18 OZ. BAKER

6V—2 1/2 QT. BAKER  
6V/W BAKER & WARMER SET



## GREASE CONTAINER

Tired of messy grease jars? Then try Frankoma's idea! Insert empty 1 lb. coffee can, pour in bacon drippings or hot fat. Handy storage for re-use or if you wish, just remove filled can and dispose of neatly. Comes with metal strainer.

26GC

Available in FRANKOMA COLORS & DWTC - \*Except where noted.

Add 50% for Flame





80—2 QT. PITCHER 5L—12 OZ. TUMBLER

# Gift Sets

82C SET  
(CARAFE, WARMER,  
4 C12 MUGS)



82 SET (82—6 CUP CARAFE & LID 82W—WARMER)



6T—6 CUP TEAPOT  
WA3—6" WARMER W/CANDLE

5DA—6 OZ. CREAMER  
5DB—6 OZ. SUGAR



5D—3 QT. PITCHER

5M—16 OZ. MUG



6S—TWO-SPOUT GRAVY  
5PS—9" PLATTER-TRAY



SOUP AND SANDWICH SET  
4SC—11 OZ. SOUP CUP  
6P—11" PLATTER-TRAY



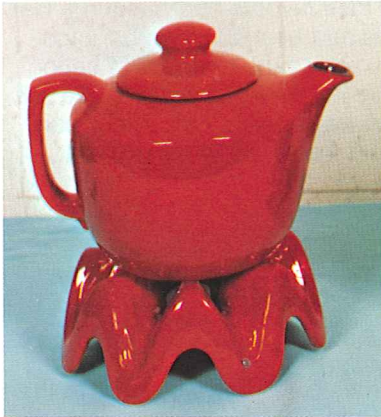
SJ - 6 1/2"  
Spoon  
Jar -



6J SET

6J—2 CUP TEAPOT  
504—INDIVIDUAL SUGAR  
553—INDIVIDUAL CREAM  
6P—11" PLATTER TRAY

6S/ST—TWO-SPOUT GRAVY/W TRAY



5TL/W—TEAPOT & WARMER SET  
5TL—12-CUP TEAPOT WA1—WARMER



26 SET  
RINGED CANNISTER SET

26F—FLOUR, COOKIES, CORN MEAL

26S—SUGAR

26C—COFFEE

26T—TEA



26DC SET

26D—1 QT. PITCHER 26DC—3 OZ. JUICE  
91—TRAY



5LC SET

81—1 QT. PITCHER 5LC—6 OZ. JUICE  
91—TRAY



26G—SUGAR/GREASE 26H—SALT & PEPPER  
26GH—4-PIECE SET/BOXED



Desert Gold



Prairie Green



Shown in Teal w/ Terra Cotta (TE/TC)  
 Solid Teal Available



Mountain Haze



Brown Satin



Country Blue



Navy Blue



Green w/Terra Cotta (GR/TC); White w/Terra Cotta (WH/TC); Teal w/Terra Cotta (TE/TC),  
 Navy Blue w/Terra Cotta (NB/TC); Mountain Haze w/Terra Cotta (MH/TC)

For thousands of years men have gloried in creating "atmosphere" around their favorite sport - eating. Harmonious and beautiful surroundings not only add to the pleasure of eating but make it a healthier pastime. We still lavish all we possibly can on our banquets and feasts, for we love to eat.

Today, from the crudest earthenware to the finest porcelain, we still choose CERAMICS of some kind for our table. Although we would not eliminate "whitewares," we love our modern pottery tableware. Why not? It is gay, happy, and colorful, and surely fits into our modern mode of living. It is with this in mind that we have created FRANKOMA TABLEWARE.

For one design we have gone to the Great Plains of the Southwest and offer you the "PLAINSMAN" pattern. Its well chosen, simple lines and sturdy shapes create an atmosphere benefitting its heritage. It is most appropriate "for fun or fashion." Every piece can be used in the microwave, oven and dishwasher.

**5LS-45 PC. SERVICE SET FOR EIGHT, BOXED**

- 8 - Cups
- 8 - Saucers
- 8 - 14 Oz. Bowls
- 8 - 7" Plates
- 8 - 10" Plates
- 1 - 13" Platter
- 1 - Creamer
- 1 - Sugar
- 1 - Sugar Lid
- 1 - Serving Bowl

**5DTS-25 PC. DELUXE STARTER SET-BOXED**

- Includes: Regular 20-Pc. Set  
 Plus 1-13" Platter
- 1-Creamer
  - 1-Sugar
  - 1-Sugar Lid
  - 1-Sugar Lid
  - 1-Serving Bowl

**5TS-20 PC. STARTER SET FOR FOUR, BOXED**

- 4 - Cups
- 4 - Saucers
- 4 - 7" B & B Plates
- 4 - 10" Plates
- 4 - 14 oz. Chili-Soup Bowls



\*5V—2 QT. BAKER/BEAN POT  
\*5V/W—BAKER/W WARMER SET



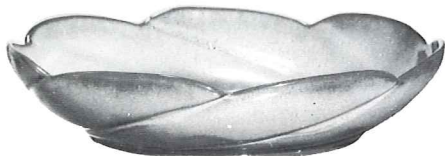
\*5W—3 QT. BAKER/BEAN POT  
\*5W/W—BAKER/W WARMER SET



\*5N—4½" QT. BOWL



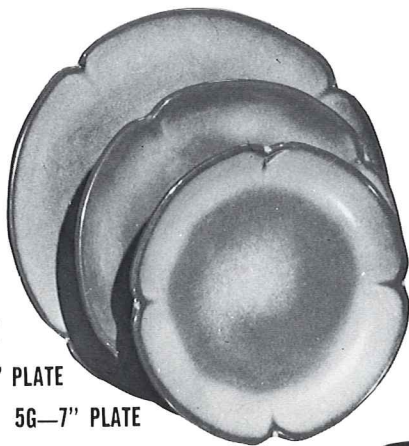
\*5XL—20 OZ. BOWL  
\*5X—14 OZ. CEREAL  
\*5XS—9 OZ. FRUIT



\*218—12" BOWL



\*6S—TWO SPOUT GRAVY



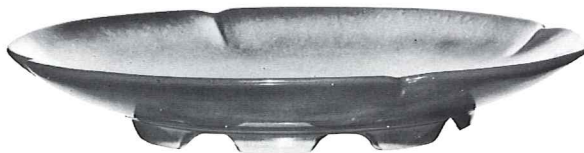
5F—10" PLATE

5FS—9" PLATE

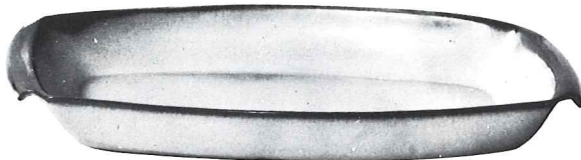
5G—7" PLATE



\*5NS—9" VEGETABLE

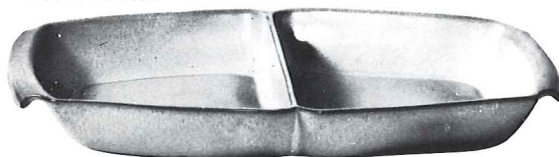


\*5FC—15" CHOP PLATE  
NO FLAME

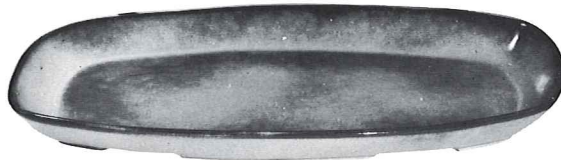


\*5P—17" PLATTER  
NO FLAME

\*5Q—13" PLATTER



\*5QD—13" DIVIDED BOWL



\*5QS—13" PLATTER

\*5PS—9" TRAY

NO FLAME \*6P—11" PLATTER



\*6T—6 CUP TEAPOT



\*6J—2 CUP TEAPOT



\*5M—16 OZ. MUG



\*5CC—5 OZ.  
TEACUP



\*\* 5C—CUP  
5E—5½" SAUCER



\*5LC—6 OZ.  
JUICE



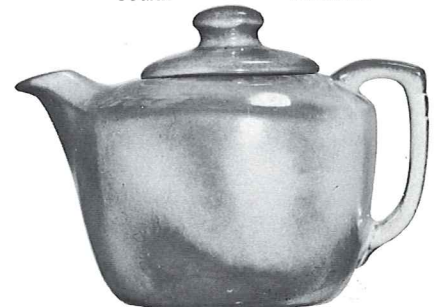
\*5L—12 OZ.  
TUMBLER



\*5DB—6 OZ.  
SUGAR



\*5DA—6 OZ.  
CREAMER



\*5TL—12 CUP TEAPOT



\*5D—3 QT. PITCHER

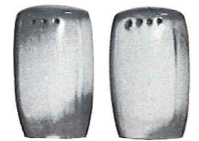
\*5AB—CREAM & SUGAR SET



\*5A—12 OZ. CREAMER



\*5B—SUGAR WITH LID



\*5H—SALT & PEPPER

This page available in colors shown on opposite page - except where noted -

\*Available in FRANKOMA COLORS - \*Except where noted. Add 50% for Flame

\*\* Cups will be sent in solid color unless specified TC.

**SETS AVAILABLE IN COLORS SHOWN**

Most accessory pieces available "open stock" in all Standard Frankoma Colors



White Sand



PEACH



Country Blue



Black



Mountain Haze



Robin Egg Blue



GREEN w/TERRA COTTA (GR/TC); WHITE w/TERRA COTTA (WH/TC); NAVY BLUE w/TERRA COTTA (NB/TC); MOUNTAIN HAZE w/TERRA COTTA (MH/TC)



Navy Blue

**6LS-45 PC. SERVICE SET FOR EIGHT, BOXED**

- |                  |                  |
|------------------|------------------|
| 8 - Cups         | 1 - 13" Platter  |
| 8 - Saucers      | 1 - Creamer      |
| 8 - 14 Oz. Bowls | 1 - Sugar        |
| 8 - 7" Plates    | 1 - Sugar Lid    |
| 8 - 10" Plates   | 1 - Serving Bowl |

**6DTS-25 PC. DELUXE STARTER SET-BOXED**

- Includes: Regular 20-Pc. Set  
 Plus 1-13" Platter  
 1-Creamer  
 1-Sugar  
 1-Sugar Lid  
 1-Serving Bowl

**6TS-20 PC. STARTER SET FOR FOUR, BOXED**

- 4 - Cups  
 4 - Saucers  
 4 - 7" B & B Plates  
 4 - 10" Plates  
 4 - 14 oz. Chili-Soup Bowls

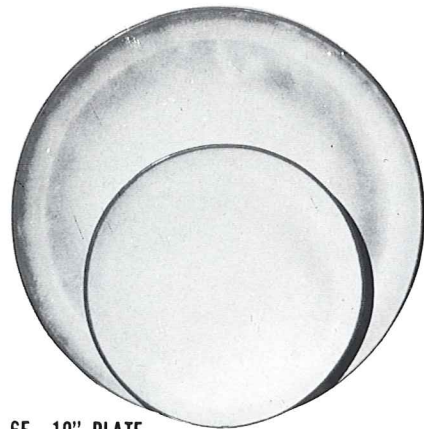
SIMPLICITY in its truest form - that's "Westwind." The carefully broken line of the shallow coupe shape is the key to the pattern. The simple unbroken line of the cup handle, with its broad thumb rest, combines grace and security.

The large and small open bakers have rolled rims for safety and ease of handling. Cleaning is no task. Much care is exercised in making these "easy-grip" knobs on the lids. This oven-to-table pottery is truly the gourmet's delight.

The homemaker today appreciates the warm, cordial earthen colors in this unique pottery. Its waxy textures are so lovely to the touch. Such tableware should be selected for its artistic qualities as well as its serviceability. "Westwind," with its basic simple lines, permits freedom in expression of personality which is so important in smart contemporary homes. You'll LOVE "Westwind" - and, of course, it can be used in the microwave, oven and dishwasher.



4K—BUTTER DISH



6F—10" PLATE

6G—7" PLATE



\* 6B—SUGAR WITH LID

\* 6AB—CREAM & SUGAR SET



\* 6A—9 OZ. CREAMER

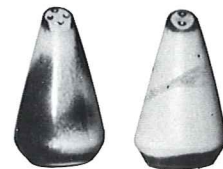


\* 6U—18 OZ. BAKER FOR TWO  
A COVERED CANDY DISH



\*\* 6C—CUP

6E—5" WELLED SAUCER



\* 6H—SALT & PEPPER



\* 6VS—1 1/2 QT. BAKER  
\* 6VS/W BAKER & WARMER SET



\* 5LC—6 OZ. JUICE



\* 5L—12 OZ.  
TUMBLER



\* 81—1 QT. PITCHER



\* 249 TACO HOLDER  
BOXED 2 PER BOX  
Not Available in Flame



\* 6V—2 1/2 QT. BAKER  
\* 6V/W BAKER & WARMER SET



\* 6T—6 CUP TEAPOT

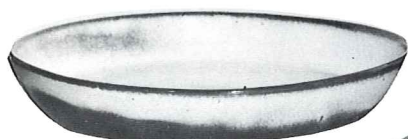


\* 80—2 QT. PITCHER

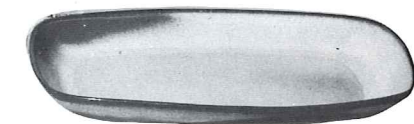
Not Available in Flame.



\* 6J—2 CUP TEAPOT



\* 91—10" BAKING DISH



\* 5QS—13" STEAK PLATE (SHALLOW PLATTER)

\* 6P—11" STEAK PLATE

\* 5PS—9" TRAY



\* X0—3 OZ.  
SINGLE SERVING  
BOWL



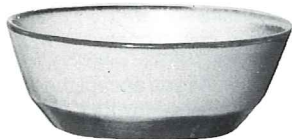
\* 6S—2 SPOUT GRAVY



\* 242 CORN DISH  
Solid Colors only-No T.C.



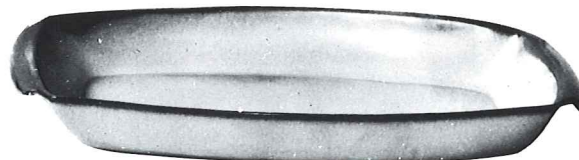
\* 243—6 1/2" CRESCENT SALAD



\* 6N—1 QT. BOWL

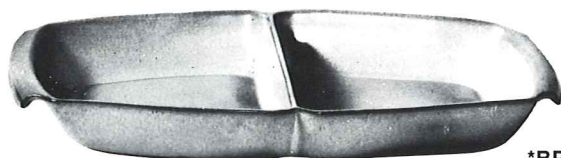


\* 6X—14 OZ. CHILI SOUP  
\* 6XS—10 OZ. FRUIT



\* 5P—17" DEEP PLATTER

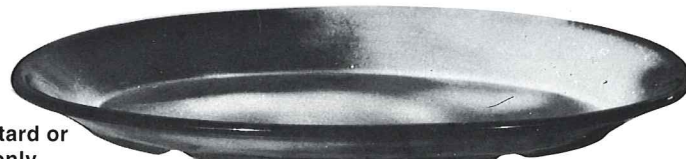
\* 5Q—13" DEEP PLATTER



\* 5QD—13" DIVIDED BOWL



\*BP-6 oz. Bean Pot, Custard or  
chip-dip- Solid colors only  
NO Terra Cotta



\* TP—17" OVAL PLATTER

This page available in colors shown on opposite page—except where noted—

\* Available in FRANKOMA COLORS! Add 50% for Flame, for Flame

\*\* Cups will be sent in solid color unless specified TC.

# LAZYBONES Pattern

SETS AVAILABLE IN COLORS SHOWN

Most accessory pieces available "open stock" in all Standard Frankoma Colors



**BROWN SATIN**



**DESERT GOLD**



**PRAIRIE GREEN**



**ROBIN EGG BLUE**



**Mountain Haze**

Our American homes are being designed and built so that home makers can take advantage of the many modern conveniences yet develop their own personalities in color and styling.

The furnishings for these contemporary homes are practical and simplified. They must be selected carefully to preserve a cordial atmosphere, which we all wish for our family and friends.

Frankoma was sensitive to these trends when this new dinnerware was being designed. The atmosphere surrounding LAZYBONES is relaxing, for you are influenced by its free flowing sculptured lines. As you accept the invitation to handle and caress each piece, you will love the way they fit the contour of your hands, for immediately they become a part of you.

Food cooked in Lazybones can go from the oven to the table — and there are so many uses for each piece. They are designed to serve!

Notice the array of Frankoma's colors. They are the gourmet's delight, for they all compliment your food and share in making every meal an occasion. The shapes themselves are both practical and beautiful.

When you set your table with Lazybones, you are set to relax, and enjoy your share of casual living. It will be the "Talk of the Table" with your family and friends.

**4LS—45 PC. SERVICE SET FOR EIGHT, BOXED**

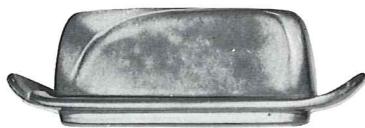
- 8 — Cups
- 8 — Saucers
- 8 — 14 Oz. Bowls
- 8 — 7" Plates
- 8 — 10" Plates
- 1 — 13" Platter
- 1 — Creamer
- 1 — Sugar
- 1 — Sugar Lid
- 1 — Serving Bowl

**4DT5—25 PC. DELUXE STARTER SET—BOXED**

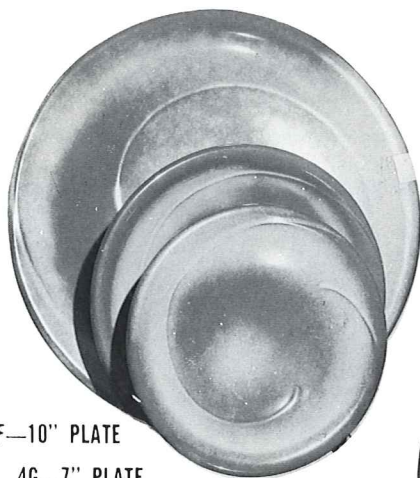
- Includes: Regular 20-Pc. Set  
Plus 1—13" Platter
- 1—Creamer
  - 1—Sugar
  - 1—Sugar Lid
  - 1—Serving Bowl

**4TS—20 PC. STARTER SET FOR FOUR, BOXED**

- 4 — Cups
- 4 — Saucers
- 4 — 7" B & B Plates
- 4 — 10" Plates
- 4 — 14 oz. Chili-Soup Bowls



4K—BUTTER DISH



4F—10" PLATE

4G—7" PLATE

4E—5" SAUCER



\*5CC—5 OZ. TEACUP



\*4X—14 OZ. CEREAL



\*5L—12 OZ. TUMBLER



\*5LC—6 OZ. JUICE



4C—CUP



4Y—6" SPOON HOLDER  
Solid Colors only-No T.C.



\*4H—SALT & PEPPER



\*4SC—11 OZ. SOUP CUP



\*4V—2 QT. BAKER/BEAN POT  
\*4V/W—BAKER/W WARMER SET



4A—8 OZ. CREAMER



4B—SUGAR WITH LID

4AB—CREAM & SUGAR SET



\*4M—18 OZ. MUG



\*4N—24 OZ. VEGETABLE



\*4P—13" PLATTER



\*M2—18 OZ. STEIN



\*224—8" ROUND BOWL



\*4W—3 QT. BAKER/BEAN POT  
\*4W/W—BAKER/W WARMER SET



\*4QD—11" DIVIDED BOWL



\*201—9" BOWL



\*242  
CORN DISH  
Solid Colors only-No T.C.



\*X0—3 OZ.  
SINGLE SERVING BOWL



\*BP-6 Bean Pot, Custard  
or chip-dip- Solid colors  
only No Terra Cotta



\*4XL—24 OZ. SALAD  
OR GUMBO



\*243—6½" CRESCENT SALAD



\*249 TACO HOLDER  
BOXED 2 PER BOX 10.00  
Not Available in Flame



\*4D—2 QT. PITCHER

This page available in colors shown on opposite page: except where noted  
\* Available in FRANKOMA COLORS & DWTC - Add 50% for Flame  
(sizes are approximate and may vary slightly)

Color charts pages 2 & 3

# AZTEC Pattern

SETS AVAILABLE IN COLORS SHOWN PLUS TEAL AND TEAL W/TERRA COTTA



**DESERT GOLD**



WHITE w/TERRA COTTA-(WH/TC): GREEN w/TERRA COTTA-(GR/TC):  
MOUNTAIN HAZE w/TERRA COTTA-(MH/TC)Teal and Terra Cotta (TE/TC)



**WHITE SAND**

**71S-45 PC. SERVICE SET  
FOR EIGHT, BOXED**

- |                  |                  |
|------------------|------------------|
| 8 - Cups         | 1 - 13" Platter  |
| 8 - Saucers      | 1 - Creamer      |
| 8 - 14 Oz. Bowls | 1 - Sugar        |
| 8 - 7" Plates    | 1 - Sugar Lid    |
| 8 - 10" Plates   | 1 - Serving Bowl |

**7DTS-25 PC. DELUXE  
STARTER SET-BOXED**

- Includes: Regular 20-Pc. Set  
Plus 1-13" Platter  
1-Creamer  
1-Sugar  
1-Sugar Lid  
1-Serving Bowl

**PRAIRIE GREEN**

**7TS-20 PC. STARTER SET  
FOR FOUR, BOXED**

- |                             |
|-----------------------------|
| 4 - Cups                    |
| 4 - Saucers                 |
| 4 - 7" B & B Plates         |
| 4 - 10" Plates              |
| 4 - 14 oz. Chili-Soup Bowls |

1,000 YEARS before Columbus "discovered" America, there flourished a civilization in this country whose artistic, social, and religious standards far surpassed any European peoples up to that time. Many archeologists not only compare the art and architecture of the Mayans and Aztecs favorably with that of ancient Egypt, but in many respects prefer their achievements in art importance. THESE were the FIRST Americans.

It is well established that the nucleus of American Indian tribes spread from the Great Southwest region. Our particular interest is in those who went South—the Mayans and Aztecs. They have given to the world some of its richest art treasures. The "golden age" of Mayan Art, in which they developed their pantheon, built their temples, perfected their Arts, social structure and government, occupied the first few centuries after Christ.

The Great Temple in Copan, Yucatan, built to the War Diety, was completed just before the Spanish invasion. The temple compound covered almost a quarter square mile,

comprising seventy-eight buildings — a most stupendous achievement and a monument to architectural beauty.

The most widely known of the Mayan and Aztec arts are the numerous hieroglyphs. They were used profusely on buildings, altars, monuments, and other such places, not only for embellishments, but for the recording of information. The decorations on the stairway of Copan alone were composed of over 2,500 different glyphs. Freehand methods prevailed entirely, for their art was their only written language.

Pottery has always evidenced every strata of culture. Fragments of pottery have been found where all other records have been destroyed, even in prehistoric times. Throughout the long history of all Indian tribes, pottery has been the universal art. The pottery of the ancient Southwestern Indians challenges comparison in color, form, and mastery of line with that of the Greek and Orientals.

It is through the inspiration of this wealth of beauty that FRANKOMA has created its Mayan-Aztec tableware.





7V-2 QT. BAKER/BEAN POT  
7V/W-BAKER & WARMER, SET



7FL-10" PLATE  
7F-9" PLATE  
7G-7" PLATE  
7E-5" SAUCER



7D-2 QT. PITCHER  
AVAILABLE IN SOLID COLOR ONLY



7W-3 QT. BAKER/BEAN POT  
7W/W-BAKER & WARMER, SET



7B-SUGAR  
WITH LID



7A-6 OZ.  
CREAMER

7AB-CREAM & SUGAR SET



7C-CUP



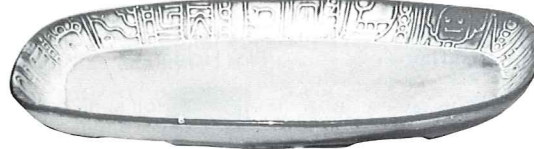
\*C4-12 OZ.  
COFFEE MUG



7M-14 OZ. MUG



7H-SALT & PEPPER



7QS-13" STEAK PLATTER (SHALLOW PLATTER)



7XO-8 OZ. FRUIT



7K-BUTTER DISH



7Q-13" DEEP PLATTER



\*243-6 1/2"  
CRESCENT SALAD



7X-14 OZ. CHILI-SOUP



7PS-9" TRAY



7XL-20 OZ. SALAD



7J-2 CUP TEAPOT



7FC-15" CHOP PLATE



7N-1 QT. VEGETABLE BOWL



7T-6 CUP TEAPOT



7TP-17" AZTEC OVAL PLATTER



\*242  
CORN DISH

SOLID COLORS ONLY

This page available in colors shown on opposite page -except where noted-  
\* Available in FRANKOMA COLORS & DWTC - Add 50% for Flame  
\*\*Cups will be sent in solid color unless specified TC.

- 94A — 8 oz creamer —
- 94B — Sugar w/lid —
- 94C — 5 oz. coffee cup —
- 94D — 2 qt. pitcher —
- 94E — 5" Saucer —
- 94F — 9" Plate —
- 94FL — 10" Plate —
- 94G — 7" Salad Plate —
- 94H — Salt-Pepper —
- 94J — 2 cup teapot —
- 94L — 12 oz. tumbler —
- 94M — 16 oz. Mug —
- 94N — 1 qt. Veg. Bowl —
- 94P — 17" Platter —
- 94Q — 13" Platter —
- 94V — 2 Qt. Baker —
- 94W — 3 Qt. Baker —
- 94X — 14 oz. Cereal —
- 94XL — 20 oz. Bowl —
- 94XO — 6 oz. Dessert —

### WAGON WHEELS PATTERN

Available as replacement pieces only. No sets.  
Colors— Green and Gold

Allow 3 months for delivery.



### SPECIAL STATE & SOUVENIR ITEMS

Available in Standard Frankoma Colors PLUS Peach & DWTC—ADD 50% for Flame



OKBP—11 1/2"  
OK Bake Pan—



461—Oklahoma  
Ash Tray—



LABP—7" LA  
Bake Pan—



MTXBP—9" Texas  
Bake Pan—



459P—6" TX Ind.  
Baker—



459—Texas  
Ash Tray—



TXJ—3" TX Tooth  
Pick Holder—



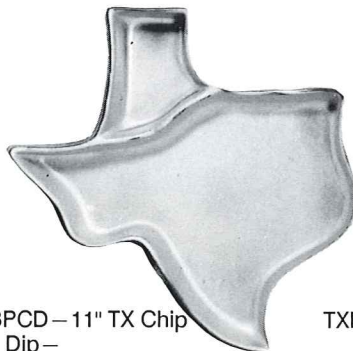
LCTR—6" Crawfish  
Trivet—



LATR—6" Louisiana  
Trivet—



TXBP—11" Texas  
Bake Pan—



TXBPCD—11" TX Chip  
and Dip—



TXBPRD—11" TX Relish  
Dish—



TST—7 1/2" TX  
Trivet—

Color charts page 2 & 3

(sizes are approximate and may vary)

### SPECIAL STATE & SOUVENIR ITEMS

PLATES AVAILABLE ONLY IN WHITE, GOLD, FLAME & T.C.—CUPS AVAILABLE IN ONLY GREEN, GOLD, WHITE, PEACH, FLAME—  
TRIVETS AVAILABLE IN FRANKOMA COLORS & T.C. "ADD 50% FOR FLAME"



OK-1—OKLAHOMA PLATE



TEX-1—TEXAS STATE PLATE



7FS—CHEROKEE  
ALPHABET PLATE



OK-2 SOONER STATE PLATE



10TR—Iowa Trivet

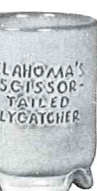


SCTR—Scissortail Trivet

8 1/2" STATE PLATES—PLATES FOOT DRILLED FOR HANGING



C16—12 OZ. OKLAHOMA MUG



C18—SCISSORTAIL MUG



C19—ROAD RUNNER  
12 OZ. MUG



OFTR—6" Okla  
Flag Trivet—



WBTR—6" Buffalo  
Trivet—

# FRANKOMA

## CHRISTMAS MEMORIAL PLATES

### AMERICA'S FIRST ANNUAL LIMITED EDITION CHRISTMAS PLATE SERIES



1965  
"Good Will Towards Men"



1966  
"Bethlehem Shepherds"



1967  
"Gifts for The Christ Child"



1968  
"Flight into Egypt"



1969  
"Laid in a Manger"



1970  
"King of Kings"



1971  
"No Room in the Inn"



1973  
"The Annunciation"



1974  
"She Loved and Cared"



1975  
"Peace on Earth"



1976  
"The Gift of Love"



1977  
"Birth of Eternal Life"



1978  
"All Nature Rejoiced"



1979  
"The Star of Hope"



1991  
LET THERE BE PEACE

Boxed

In 1965 The Late John Frank, Artist and Founder of Frankoma Pottery created the first annual Christmas plate made in America. They were inspired by the Christmas story and the fact that the life of Christ has been an inspiration of more "Art" in all of its mediums, than any one subject in the history of the world. A self imposed demand was that every plate should have a scriptural background for each years renderings. No other pottery to our knowledge has attempted a religious annual commemorative plate in the history of America.

They are done in a low bas-relief, with sharp enough detail, and sufficient good modeling as to make each plate a treasured piece of sculpture, as well as tell a story relative to Christmas time and the life of Christ. They are done in a semi-translucent "Della Robbia" white glaze. The plate is 8 1/2 inches in diameter; the master mold was signed by Mr. Frank through 1973. Beginning in 1974 the master mold is signed by his daughter Joniece Frank; all plates are copyrighted. The production is limited to those that are actually sold up till about the 10th of December. The master mold is destroyed on Christmas eve, and there are none made after that. The edition is limited to that year. These plates are introduced in early spring. We have tried to keep the price very reasonable so that more people can afford to own them, collect and enjoy them. We hope they will be a spiritual inspiration and reminder of the lasting value of the scriptures, and a blessing to all those who possess them.

### PAST ISSUES NO LONGER AVAILABLE FROM FACTORY



1987  
"GOD'S CHOSEN FAMILY"



1988  
"THE GUIDING LIGHT"



1989  
"The Blessing of Christmas"



1990  
"The Angles Rejoice"



1972  
"Seeking The Christ Child"



1974  
"She Loved and Cared"



1976  
"The Gift of Love"



1978  
"All Nature Rejoiced"



1986  
"For Thee I Play My Drum"



1985  
"The Angels Watched"



1984  
"Faith, Hope and Love"



1983  
"The Wise Men Bring Gifts"



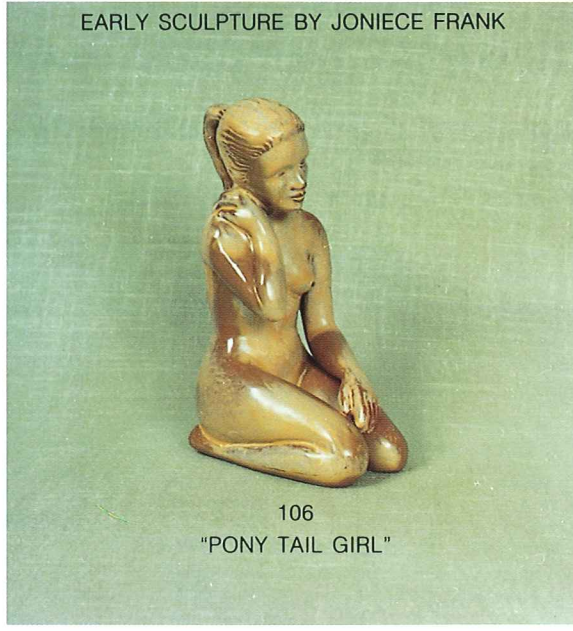
1982  
"The Wise Men Rejoice"



1981  
"O, Come Let Us Adore Him"



1980  
"Unto us a Child is Born"



**CREATIONS BY GRACE LEE**



GRACE LEE



GM4

Boxed

"THE YOUTHFUL MADONNA"  
 F.P. 1986  
 RUBBED BISQUE ONLY



109—BABY BIRD



108—MOTHER BIRD

AVAILABLE IN ALL COLORS  
 ADD 50% FOR FLAME



**REPRODUCTIONS OF WILLARD STONE'S  
 WOOD CARVINGS**

Today's homes are "confines around our treasures", no matter what they "cost". Only a few can afford the "originals" of masters, but even the meagerest of homes are entitled to be enriched by living with good reproductions of them. All of the originals of the items we reproduce, are owned by Frankoma.

The wood sculpture of WILLARD STONE, a Cherokee, is a part of most museums, especially of the Southwest. His unique down to earth and humanistic style has brought him into many of the leading art galleries in America. We try to faithfully reproduce the few we are privileged to own.

MARE AND COLT - #103  
 12" TALL -

INDIAN MAIDEN - #101  
 12" TALL -

ONLY in:  
 Rubbed Bisque

SQUIRREL - #105  
 6" TALL -

COYOTE - #102  
 12 1/2" TALL -

INDIAN MADONNA #104 - 14" TALL -  
 AVAILABLE IN Rubbed Bisque, Navy Blue & White



## RETAIL MAIL ORDERING

Our mail order service is used by many people to continue with their Frankoma Patterns or Collectables, and also for that special gift for a friend. To mail order, please use the enclosed order form to insure receiving the correct items and colors. After completing your order, use the Postage and Insurance Table to determine cost. Add 4 1/2% sales tax, if you are an Oklahoma resident; and please enclose either a check or Visa/MC number for the full amount of pottery plus the charges from the table on the front.

Seconds are sold through our Gift Shop, however they cannot be ordered or shipped by mail.

(Please Allow 4-6 Weeks For Delivery)

FOLD

STAMP

**FRANKOMA POTTERY**  
**P.O. Box 789**  
**Sapulpa, OK 74067**

FOLD

Frankoma's Gift Shop is located adjacent to the Frankoma Factory in Sapulpa, Oklahoma. The Gift Shop is open Monday through Saturday from 8:00 A.M. until 6:00 P.M. Open Sunday 12:30-5:00 May 1 thru Labor Day and Nov. 1 thru Dec.31.

(Call For Holiday Hours)

## TOURS OF FRANKOMA

Frankoma offers plant tours of Frankoma Pottery Monday through Friday from 9:00 till 3:15. We invite you to stop by and see how Frankoma is made.

Thank You ----  
FROM  
Frankoma Pottery

# FRANKOMA - An Idea Takes Shape Process of Manufacturing



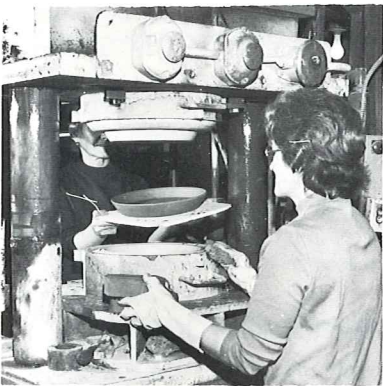
(1) Slip Casting

Frankoma is hand crafted earthenware pottery. Frankoma is a complete pottery; we dig our own clay in Sapulpa, process it; develop and mix all our own glazes and colors; make our own molds and create our own designs.

Our pottery is formed in one of **two ways**; casting and pressing. Casting: (1) The clay is mixed with water to make a liquid clay called "slip", then poured into plaster molds. During the 45 minutes the slip sits in the mold, water is absorbed by the mold creating harder clay against the walls of the mold. The slip is then poured out, the clay the water was taken from remains, thus creating the piece. (2) After 4 more hours of drying and preparation the piece is removed from the mold to dry overnight. Pressing: (3) Because of the nature of the clay, some pieces cannot be made by casting. Therefore, we use a hydraulic press. The clay is placed between the two pieces of a mold. The top of the mold lowers up to 50 tons of pressure and forms the piece. All plates and flat pieces are made on the press.



(2) Removing piece from mold.



(3) Pressing

Regardless if a piece is cast or pressed, it must be dried and then trimmed. (4) Each piece is hand trimmed. The rough edges are removed with a paring knife. (5) Then, to complete the smoothing process, the piece is wiped with a wet sponge. Frankoma is unique in that we fire our pottery only once; therefore, after the trimming, it is ready for the glaze, (glaze is the color; glaze is basically a liquid glass that melts and fuses with the clay when it is fired). The glaze is applied on the inside by "dipping". The glaze is simply poured in and then poured out, and it coats the inside. (6) Then the outside is glazed with a spray gun. The application of the glaze is very important. It must be applied just right, not too thin and not too thick. (7) The pottery is then fired for 18 hours at approximately 2,000 degrees. During the firing process the glaze melts, changes color, and becomes the piece of pottery you enjoy in your home. (8) All Frankoma's designs are original. This requires a complete well equipped mold shop with competent mold makers to effectively complete the designers ideas for production.



(4) Trimming with knife.



(5) Sponging



(6) Glazing

Frankoma Pottery, A Division of Frankoma Industries, Inc., looks forward to more new designs and colorful than ever before maintaining our quality and dependability as it has for 58 years. Thank you for enjoying FRANKOMA in the past and in the future, You are cordially invited to tour the plant during working hours.

COME SEE US . . .

There has been much said during the last few years about "lead poisoning" from using pottery dishes and containers. Shown here is the Official Seal of Certification, that this ware is ALL safe from lead poisoning.

- Practically all pottery wares made in the U.S. are so certified, so . . .



Buy Frankoma!  
Be Safe • Buy American



(8) Making a Mold



(7) Stacking kiln for firing.

Available in 1991  
Color: Mottled Ivory  
5-oz. Coffee Mug



1991 Elephant Mug

1968 - White; 1969 - Flame; 1970 - Blue; 1971 - Black; 1972 - Prairie Green; 1973 - Desert Gold; 1974 - Coffee; 1975 - Autumn Yellow; 1976 - Centennial Red; 1977 - Pink; 1978 - Moss; 1979 - Brown Satin; 1980 - Terra Cotta; 1981 - Celery Green; 1982 - Robin Egg Blue; 1983 - Wisteria; 1984 - Mulberry; 1985 - Navy Blue; 1986 - Mountain Haze; 1987 - Lemon; 1988 - Onyx Black; 1989 - Peach; 1990 - Teal

The original "Elephant Mug" was created for the National Republican Womens Club and copyrighted by Frankoma in 1969 and patented in 1970. The "Donkey Mug" was created in 1975 copyrighted and patented.

Now each year these mugs are produced by Frankoma as a stock item. The current mugs are only available during that year — Each year the color is different.

© F.P. 1975, U.S. Pat. No. D605,739

© F.P. 1969, U.S. Pat No. D214,868

*Past Issues No Longer Available From Factory*

President and Vice President name on mug in the Inaugural year.

Available in 1991  
Color: Mottled Ivory  
5-oz. Coffee Mug



1991 Donkey Mug

1975 - Autumn Yellow; 1976 - Centennial Red; 1977 - Pink; 1978 - Moss; 1979 - Brown Satin; 1980 - Terra Cotta; 1981 - Celery Green; 1982 - Robin Egg Blue; 1983 - Wisteria; 1984 - Mulberry; 1985 - Navy Blue; 1986 - Mountain Haze; 1987 - Lemon; 1988 - Onyx Black; 1989 - Peach; 1990 - Teal

### HOW TO MAINTAIN THE BEAUTY OF FRANKOMA:

Frankoma's hand-mixed glazes are designed not only for beauty, but also for durability. The following simple steps will insure that beauty and durability.

1. Frankoma's glazes are durable, but the alloys in some flat ware may occasionally mark the finish. If these marks should appear on your pottery, a mild powdered cleanser should be used to remove them. Normal mild household cleansers will not harm the finish.
2. Cups and mugs should be rinsed after serving coffee or tea to avoid stains. Should a stain buildup occur you could restore the beauty of your cups by soaking them in a solution of 1/2 liquid bleach and 1/2 water.

### HOW AND WHERE YOU CAN PREPARE FOOD:

Frankoma is safe in conventional ovens, microwaves and dishwashers. However, it should never be used from cold temperatures into any heating unit. Frankoma should never be used directly on heat from either electric or gas ranges. Room temperature is best for placing of dinnerware in the oven. Hot serving pieces should never be placed on a cold or wet surface. For reasons unknown to us, Frankoma pieces will retain heat in a microwave and other similar pieces remain normal.

### PROTECTING DELICATE SURFACES:

1. Due to Frankoma's unique red-firing clay it is necessary for each and every piece to have an unglazed surface on the bottom. Due to the nature of the product there may occasionally be an abrasive surface on the unglazed area. For this reason it is recommended to always use placemats or a tablecloth with any pottery, stone ware or china.
2. Pottery floral containers and planters require the same care as glass. Always place your container on a plate of some type. Condensation may occur on pottery as it does on glass, and a plate will protect your good wood finishes.

### WARRANTY:

Frankoma Pottery carries a full one-year warranty against defects in materials or workmanship. Our warranty does not cover chipping. Frankoma Pottery is manufactured with as much durability as possible; however, chipping can occur if contact is made with another object. If you find you have a defective piece, contact your local representative or Frankoma Pottery, Customer Service Department, P.O. Box 789, Sapulpa, OK 74067.

You are a welcomed guest at the factory any time. Should you come during working hours, we will be glad to conduct you through the plant to see Frankoma made. (Tours Monday thru Friday, 9:00 a.m. - 3:00 p.m. Gift Shop hours - Monday thru Saturday 8:00 a.m. - 6:00 p.m. Sunday - 12:30 p.m. - 5:00 p.m.)



### TERRA COTTA DINNERWARE

Terra Cotta is now offered in dinnerware. The inside is glazed with color and the rich red-firing clay of Terra Cotta shows outside.

The colors available in Terra Cotta Dinnerware and gourmet items are Navy Blue and Terra Cotta (NB/TC), White Sand and Terra Cotta (WH/TC), Prairie Green and Terra Cotta (GR/TC), and Mountain Haze and Terra Cotta (MH/TC) Teal and Terra Cotta (TE/TC)

### CARE OF TERRA COTTA EARTHENWARE

Terra Cotta earthenware is a clay product that has been fired in temperatures that approach 2,000° F and it is not glazed. The firing process does not vitrify (become glass-like), therefore it has some porosity and will absorb some moisture.

Terra Cotta dinnerware can be placed through the normal dishwashing process. It should be allowed to dry so that the moisture may evaporate from the porous characteristics of the terra cotta. If food adheres to the terra cotta and normal dishwashing does not remove the food, a pyrolytic process will remove such. An oven with a self-cleaning cycle that reaches 800° or more (pyrolytic) will bake the food off of the terra cotta.

### Specialty Advertising, Premiums, Promotions

Specialty advertising, quality and affordable price. Schools; Companies; organizations. We put your logo on quality merchandise. Details available upon request.

## FRANKOMA POTTERY

A Division of Frankoma Industries, Inc.  
Box 789 - 2400 Frankoma Road  
Sapulpa, Oklahoma 74067  
918-224-5511 - 800-331-3650  
Fax-918-227-3117